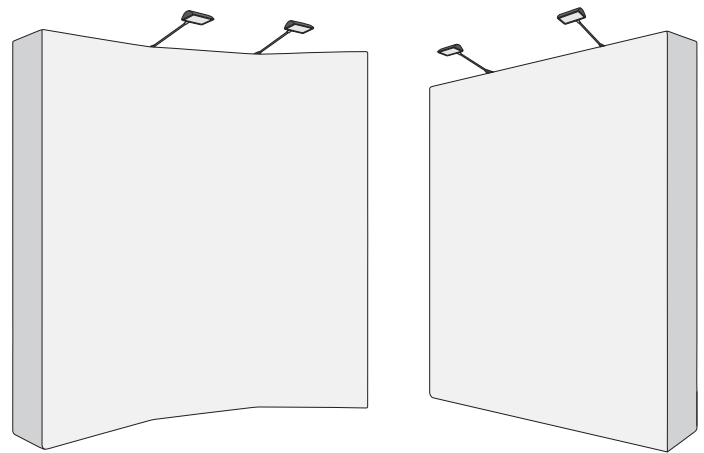
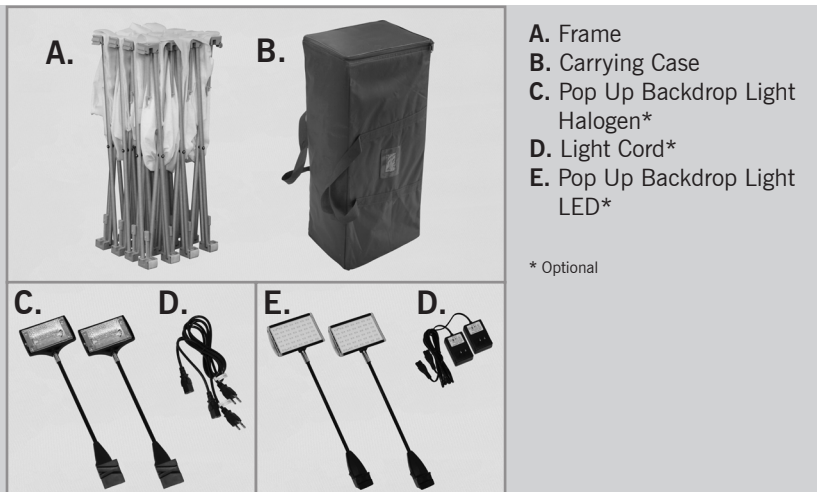


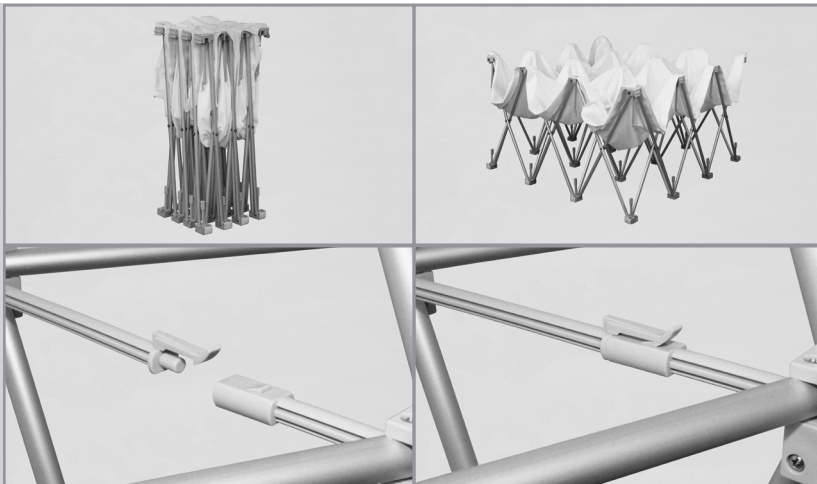
# Pop Up Backdrop Straight & Curved

R1.060515

## ASSEMBLY HARDWARE

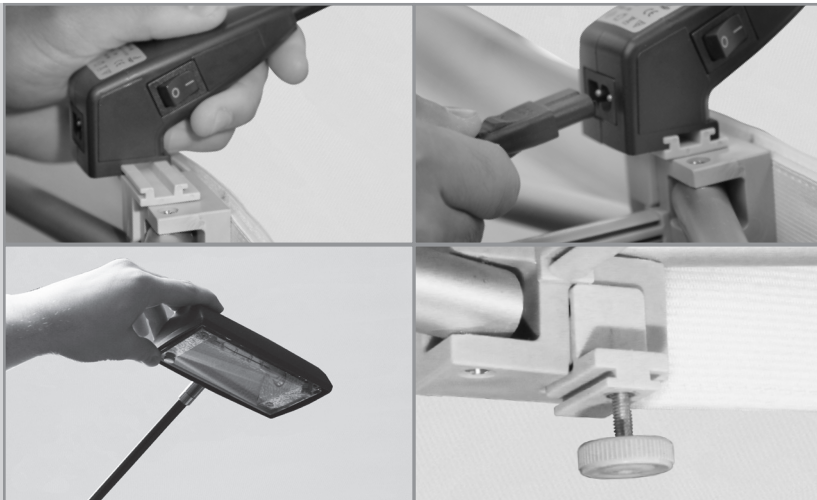


## ASSEMBLY



**NOTE: Additional people may be required for larger displays.**

1. Place fully collapsed frame (A) down onto the ground with the print side facing up.
2. Begin to expand the frame (A) outwards.
3. Connect all exposed plastic connectors, located within the frame (A), by pressing each end together until the plastic tab “snaps” into place.



**OPTIONAL: If Pop Up Backdrop Lights are NOT being used, skip to STEP 7.**

4. Slide the base of the Pop Up Backdrop Light Halogen (C) or Pop Up Backdrop Light LED (E) onto one of the desired light mounts located on the top-front of the frame (A). Repeat with second light, if two are being installed.
5. Connect the light cord (D) into the base of the light(s).
6. Stand the fully assembled frame (A) vertically and adjust the angle of the lights. Plug in the light cord (D) and switch the light(s) on. Connect any remaining plastic connectors within the frame (A).
7. If frame (A) needs leveling, adjust the height of the leveling feet located at the bottom-front of the frame (A).

## MOUNTING OR CHANGING PRINTS



Remove the old print by simply pulling the print off the frame (A). To mount a new print, start at one of the corners of the frame (A) and align the corresponding corner of the new print. Begin to attach the print to the frame (A) by using the hook-and-loop adhesive. Make sure the print is **EXTREMELY** taut and even on the frame (A). Continue with the full perimeter of the print.



AMERICA'S SUPERSTORE FOR CHURCH BANNERS, DISPLAY SYSTEMS & INSPIRATIONAL PRODUCTS

PO Box 1024 | Gallatin Tennessee 37066-1024 USA | 615.206.8400 or 615.395.8024 | [customerservice@banners4churches.com](mailto:customerservice@banners4churches.com)  
[www.banners4churches.com](http://www.banners4churches.com) | [banners4churches.printesto.com](http://banners4churches.printesto.com)