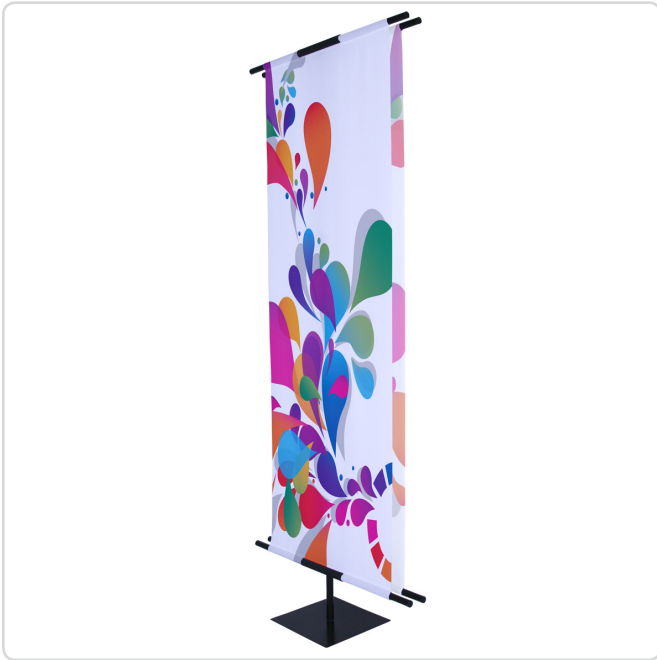


CLASSIC STAND

Technical Specifications | R1.060815



DESCRIPTION

The Classic Stand is a traditional display stand constructed of sleek, black aluminum hardware. This display is adjustable with a telescopic pole that reaches any height between 4' and 8' tall and a thumb lock to keep it in place. The Classic Stand features exposed banner arms and a custom print. Because it installs with a mounting bracket, your print can be changed in minutes and completed with the included trip-safe base plate. This display is highly portable and comes with an economy bag for storage and transport. The Classic Stand is a simple yet versatile stand that can be used both indoors and temporarily outdoors to promote a product at a retail store or to draw attention at a business conference.

PRODUCT SPECIFICATIONS

NAME	Classic Stand
PART NO.	#H_DS00600 - Pole Set #H_DS00601 - Base #H_BF00521 - Thorn
WEIGHT	10.5lb
DISPLAY SIZE	2.6' x 4.0'-8.0' x 1.0'

PRINT SPECIFICATIONS*

PRINT SIZE	(1) 1.0' x 2.0'	(1) 1.5' x 5.0'
	(1) 1.0' x 3.0'	(1) 2.0' x 6.0'
	(1) 1.5' x 4.0'	(1) 2.6' x 6.6'

*Custom Sizes Available

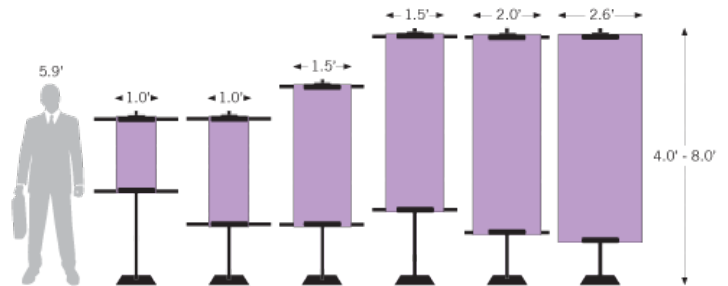
FINISHING

MATERIAL	Multisol® D	Dekoflag G	Dekoflag H
	Vinyl Opaque 13oz		

INCLUDES

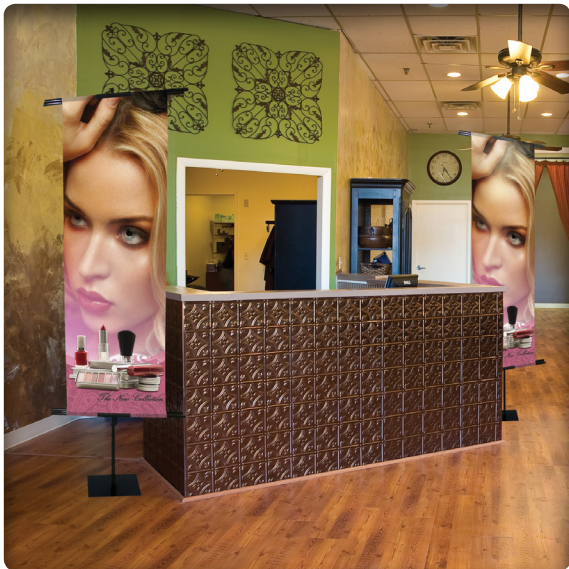
Aluminum pole (4) Banner arms (2) Mounting brackets w/ pole clips
Trip-safe base w/ thorn

PRODUCT SKETCH



PRODUCT USAGE

This product is recommended for use indoors or temporarily outdoors.



AMERICA'S SUPERSTORE FOR CHURCH BANNERS, DISPLAY SYSTEMS & INSPIRATIONAL PRODUCTS

PO Box 1024 | Gallatin Tennessee 37066-1024 USA | 615.206.8400 or 615.395.8024 | customerservice@banners4churches.com
www.banners4churches.com | banners4churches.printesto.com